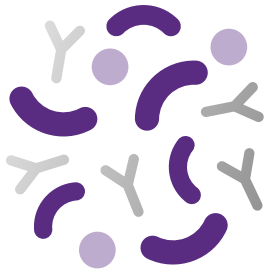


Study in a real-world setting in Argentina

EFFICACY OF AN EHF WITH SYNBIOTICS IN INFANTS WITH CMA



Soria, et al. Front. Allergy. 2023;4:1265083.

Patient Group

- 65 infants with suspected or confirmed CMA
- Argentina multicenter
- Recruited at the point of first hypoallergenic formula prescription

Method

- Single arm observational, prospective study
- 28 days intervention period; EHF with synbiotics (exclusively formula-fed or mixed-fed)
- Synbiotic blend: *Bifidobacterium breve* M-16V (probiotic) and short chain galacto- and long chain fructo- oligossacharides (prebiotic)

Results

EHF with synbiotics demonstrated CMA symptom resolution or improvement

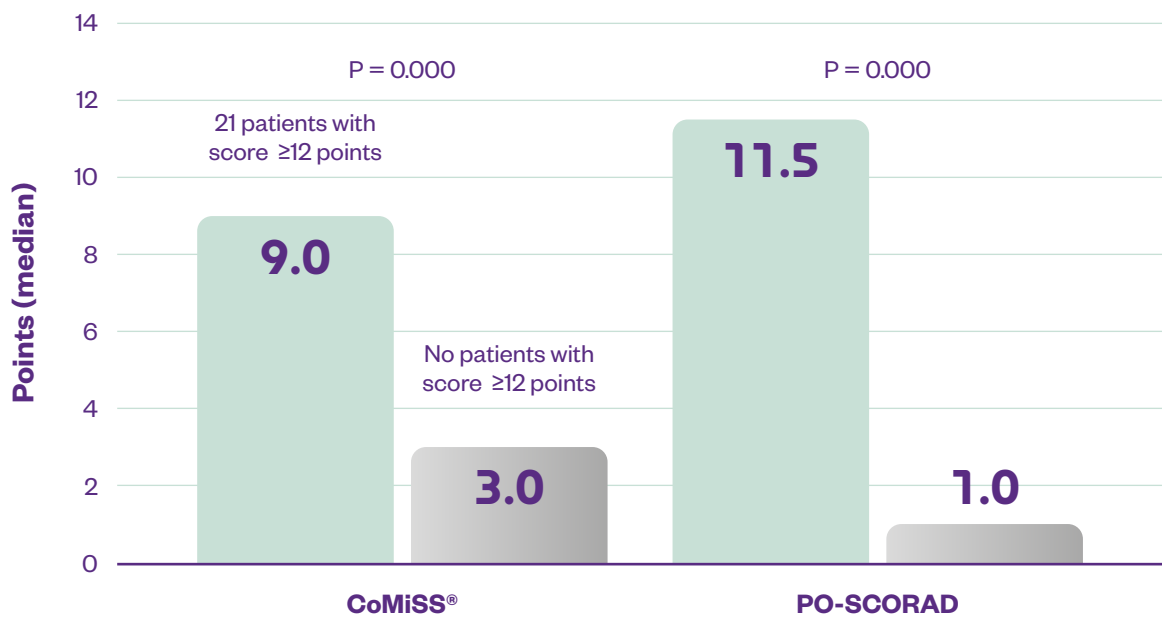


Figure 1. Symptom evolution during intervention period of 28 days with eHF with synbiotics (n=65) assessed by physicians and parents using the Cow's Milk Allergy Symptoms Score (CoMiSS®) and Patient Oriented Scoring Atopic Dermatitis (PO-SCORAD), respectively.



Gastrointestinal symptoms

92%

of infants' GI symptoms were resolved or improved



Reduced frequency of stools and parent reported improvement of stool consistency



Reduced frequency of regurgitations and parent reported discomfort due to regurgitation



Skin symptoms

87.5%

of infants' skin symptoms were resolved or improved



Significant improvement in quality of life



Reduced crying time and improvement of sleeping patterns



Reduced the family burden associated with CMA

AN EHF WITH SYNBIOTICS IS:



Well tolerated



Well accepted



Supports normal growth

Conclusions

In this study, in a real-world setting, the use of an EHF with synbiotics demonstrated **improvement of overall, gastrointestinal, and dermatological allergy symptoms.**

Data demonstrated a significant **reduction in the frequency of regurgitation and bowel movements, and an improvement in stool consistency.**

Parents also reported an **improvement in sleep patterns and quality of life.**